

MICROSTATION®

The **V8** Generation

The best design and engineering platform in the world

MicroStation® is a single, comprehensive platform for design and engineering projects and is the foundation of the V8 Generation of software from Bentley. MicroStation capabilities make it better suited for 3D modeling, data versatility, workgroup productivity and application development than any other design platform on the market.

MicroStation industry-specific extensions make you even more productive, with powerful tools for specialized tasks that enrich your design and engineering data, making it more valuable throughout the project life cycle.

Data Interoperability

Native support for DGN and DWG files makes MicroStation the universal authoring tool for design and engineering projects. Because MicroStation eliminates concerns about deliverable file formats, data exchange and file translations, you can focus on creating and maintaining your architecture, engineering and construction content.

Collaborative Functionality

Enhanced workgroup productivity is made possible through capabilities such as powerful reference functionality and multiple model support within DGN files, as well as the use of industry-specific extensions. In addition, standards management and dedicated Workmodes ease deployment in the project team environment.

Change Management

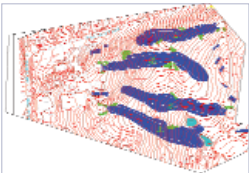
The ability to record, review, restore and interrogate design changes is an integral part of every project. MicroStation incorporates a robust design history facility to track the evolution of each DGN file. When combined with digital rights and digital signatures technology, you can monitor progress and add security and accountability to your projects.

Advanced Modeling and Visualization

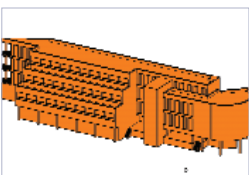
MicroStation 3D design capabilities are comprised of a balanced blend of wireframe, surface and solid modeling tools, so you can effectively capture your design intent. Professional-level, photorealistic rendering tools with extensive material and lighting libraries allow you to present high-quality images and animations of your designs.

Extensibility

MicroStation is offered with integrated, industry-specific application portfolios that complement and extend the rich feature set of MicroStation. In addition, flexible programming support makes MicroStation highly adaptable to your business needs and requirements.



Natively read and write both DGN and DWG files.

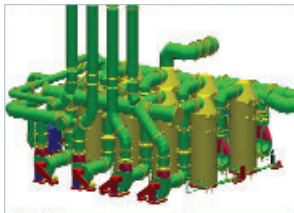


MicroStation includes a powerful feature-based 3D Design toolset.



MicroStation offers a professional level of photorealistic rendering tools. (Image courtesy of Thomas Tsai)

MICROSTATION AT-A-GLANCE



Facilities for change management are built into every DGN file.



MicroStation is highly adaptable to your business needs. (Image courtesy of Whitby Bird)

MICROSTATION SYSTEM REQUIREMENTS

- Processor: Intel Pentium-based or AMD Athlon™-based PC or workstation
- Operating System: Microsoft Windows® XP Professional, Windows 2000 (SP2 or higher recommended*), Windows NT® 4 (SP6 recommended†), Windows Me, Windows XP Home Edition, or Windows 98 Second Edition††
- Memory: 128 MB RAM
- Disk Space: 200 MB minimum free disk space
- Input Device: Windows pointing device
- Output Device: Works with most Microsoft Windows-supported output devices
- Video: Supported graphics card. Dual screen graphics supported with vendor-supplied drivers for Windows NT 4. Multi-monitor configurations supported with Windows 98 and Windows 2000.

* See Bentley's Web site for updates to this information.

† Required for Digital Rights

†† Digital Rights not supported

DWG Support

- Ability to natively read, write and reference DWG files
- Dedicated Workmodes to lock out unsupported functionality
- Support for DWG files from AutoCAD® R2.6 to R2002
- AutoCAD keyboard alias support
- SHX font support

Design History

- Ability to record and review the complete history of a DGN file and attached references
- Ability to restore previous design iterations
- Incorporated into every DGN file

References

- Unlimited number of references
- Compatible with DGN and DWG data
- Integrated with Design History
- Self-reference support
- Nested reference support

Digital Signatures

- Industry-standard encryption techniques
- Ability to digitally sign designs and drawings
- Graphical and non-graphical signature representations
- Applicable to DGN and DWG
- Multiple and hierarchical signature configurations

Digital Rights

- Ability to define secure permissions for viewing, printing and editing
- Fully integrated with digital signature technology
- Permission expiration feature
- File password protection

3D Design

- Wireframe, surface and solid modeling
- Primitive-based modeling
- Feature-based solid modeling
- Boolean operations
- Advanced editing
- Global variables and dimension-driven design support

Raster Manager

- Multiple raster image support (aerial photographs, satellite imagery and scanned maps and drawings, among others)
- Multiple image display within one design file
- PostScript and HPGL2/RTL printing device support
- Supports industry-standard raster formats from 1-bit monochromatic to 24-bit color (including iTiff, GeoTIFF, JPG, CIT, COT, RLE, etc.). Multiple wavelet compression formats ECW and MrSID are also supported

Visualization

- Constant, Smooth, Phong, Raytrace and Particle Trace rendering options
- Extensive material and lighting libraries
- Industry-standard file format support

Named Groups and Display Sets

- Interactive definition of common selection sets
- Stored within DGN file
- Element modification in defined sets
- On-demand recall

AccuDraw® and AccuSnap™ Navigation Tools

- Linear and angular input
- Dynamic control of drawing planes and coordinate systems
- Automatic identification of geometric keypoints
- Applicable in both 2D and 3D environments
- Snap mode support

Extensibility

- Customizable user interface
- Support for Microsoft® Visual Basic® for Applications (VBA)
- Continued support for MDL® and MicroStation BASIC
- Industry-specific extensions and application portfolios

CALL TODAY FOR MORE INFORMATION

Bentley Systems, Incorporated, is a global provider of collaborative software solutions that enable our users to create, manage and publish architectural, engineering and construction (AEC) content. As a part of those solutions, Bentley provides professional services including implementation, integration, customization and training.

Visit us on the Web for more information about Bentley solutions and services. www.bentley.com

Bentley North American Headquarters

Bentley Systems, Incorporated
685 Stockton Drive
Exton, PA 19341 USA
Phone: +1 800 BENTLEY (+1 800 236 8539)
Outside the US +1 610 458 5000
Fax: +1 610 458 1060

GeoModeling

Ilica 191F
HR-10 000, Zagreb
CROATIA
tel: +385-1-3775-411
fax: +385-1-3775-412
info@geomodeling.hr
www.geomodeling.hr

To find a local Bentley office, please visit www.bentley.com/corporate/contacts.

