

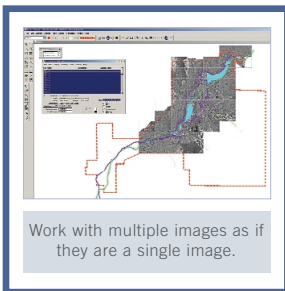
BENTLEY® DESCARTES™

The **v8** Generation

One-stop imaging for mapping, visualization, and raster-to-vector conversion projects

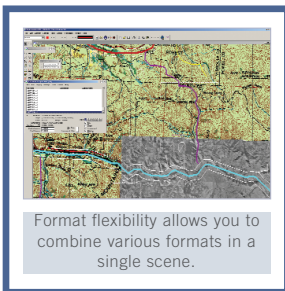
Designed to support production imaging and visualization workflows, Bentley® Descartes™ is used around the world in mapping, civil engineering, and other AEC projects.

Bentley Descartes is a comprehensive imaging solution with tools to warp, reference, resample, edit, enhance, and mosaic aerial imagery. With Bentley Descartes, you can drape completed image mosaics over 3D terrains to produce outstanding image scenes. You can also create or update color maps with a rich set of brushes and editing tools. Plus, you can convert maps or documents with integrated line-following and optical character recognition (OCR) capabilities.



Bring Your Projects to Life

Everyone understands a picture. With Bentley Descartes, you can work as if you are at the site. You can use any MicroStation® editing tool to draw over an image backdrop or load any MicroStation Development Language (MDL®) application and use it with Bentley Descartes. By incorporating images into your projects, you can produce striking visual documents that are easy to understand and help communicate designs effectively to colleagues, clients, and the public.

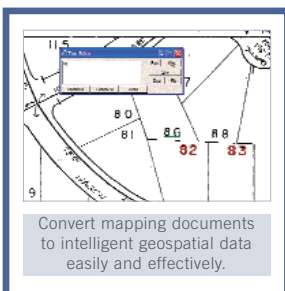


Format Flexibility

Bentley Descartes makes it easy to use any source image or document to address the diverse needs of all imaging, visualization, and conversion projects. You can use individual images or different types of images simultaneously. The high-performance image display of Bentley Descartes lets you work easily with a wide range of industry-standard raster file formats. And performance is maintained, no matter how large the file or mosaic size.

WYSIWYG Georeferencing

You can quickly and efficiently register images with Bentley Descartes. The WYSIWYG registration process is much more intuitive than methods that require distinct windows for vector and image data or rely heavily on transformational statistics. A range of tools lets you perform operations from simple image squaring to multipoint precision registration.



Extensive Editing, Mosaicking, and Visualization Tools

Bentley Descartes allows you to rapidly create seamless image mosaics. Bentley Descartes includes tools to move, scale, and rotate images or objects within images, as well as tools to make regions of images translucent or transparent. These intuitive tools display dynamic feedback, providing the most efficient image manipulation possible. Once complete, you can drape your image mosaic over a digital terrain model and create exciting, dynamic presentations. You can also create an AVI and integrate it into a presentation or proposal with minimal effort.

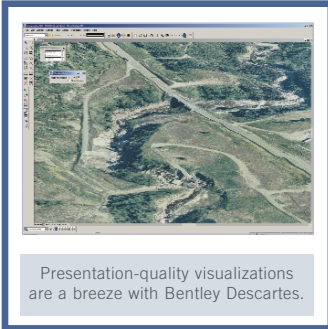
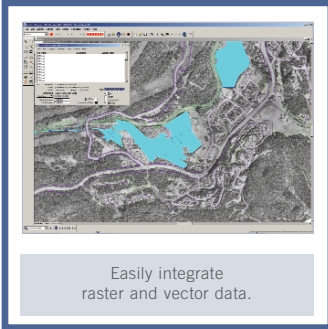
Superior Map Editing and Document Conversion

Bentley Descartes includes a rich set of tools to convert maps and other documents. You can work completely in raster, convert raster to vectors, or work with hybrid raster/vector files. You can also work with black and white or color documents. Plus, you can use line-following tools, color brushes, and OCR to streamline and automate your conversion projects.



Visit us on the Web for more information about Bentley solutions and services.
www.bentley.com

BENTLEY DESCARTES AT-A-GLANCE



SYSTEM REQUIREMENTS

- Software: MicroStation V8
- Processor: Intel® Pentium®-based or AMD-based PCs and workstations running one of the following:
- Operating System: Windows® 2000, Windows XP Professional, Windows XP Home Edition, Windows Me, Windows NT® 4 (SP6 recommended), Windows 98 (Second Edition recommended)
- CD drive or access to the Internet required for product installation
- Memory: 128 MB
- Disk Space: 200 MB minimum free disk space
- Input Device: Mouse or digitizing tablet (digitizing tablet requires vendor-supplied WINTAB driver or Bentley's Digitizer Tablet Interface—the latter is included with the MicroStation installation)
- Output Device: A host of industry-standard devices are supported. Works with output devices supported by Windows.
- Video: Supported graphics card. Dual-screen graphics supported with vendor-supplied drivers for Windows NT 4. Multi-monitor configurations supported with Windows 98 and Windows 2000

Image Selection Sets

- Ability to perform the same operation on multiple images, simultaneously
- Ability to process mosaics as a single image
- Ability to move, scale, rotate, or warp image mosaics in a single operation

Native File Support

- Fast open operations
- Fast save operations
- No conversion needed
- Seamless and more flexible workflow

Bentley Publisher Client

- Ability to view and work with images from a remote server, anywhere in the world, without interrupting the workflow
- Improved internal collaboration
- More efficient workgroup productivity

Automatic Vector Stamping

- Easy, user-friendly stamping interface for more productive workflow
- Stamp settings achieve optimal stamp results without manual "experimenting"
- WYSIWYG stamping as vector data is stamped at the current zoom factor

Image Transform Modify Image Function

- Ability to interactively move, scale, rotate, and change the affinity angle of an image scene
- Ability to perform the same operation on multiple images, simultaneously
- Instantaneous visual feedback

Enhanced Toolset for 3D

Image Manipulation

- Perspective
- Elevation
- Ability to modify in any orientation (front, right, isometric, etc.)

Mosaic Tools

- Automatic seaming
- Automatic feathering
- Unlimited number of images
- Automatic color balance

Precision Warping with Register

- Easy-to-use interface for creation of more precise warps
- Accurate results the first time with WYSIWYG display of vectors and control points over raster
- Precise fit without iterations
- Ability to offload processing to a convenient time with batch resampling

Automatic and Interactive Raster-to-vector Conversion

- Rapid conversion of drawings or maps into useful, discipline-ready vectors
- A wide range of tools (snap to interactive conversion to automated conversion) for great flexibility in workflow adjustments for different projects or varying documents
- Conversion of any type of map or drawing, in black and white or color

Industry-standard File Format Support

- Formats: TIFF (1 to 32-bit), GEOTIFF, iTIFF, COT, CIT, RLE, CALS, PCX, IMG, BUM, TG4, INT, RGB, TGA, JPEG, RLC, RS, HMR, BMP, and IKONOS 3, and 4 bands from Space Imaging
- Compression schemes: Deflate, PackBits, CCITT3, CCITT4, and JPEG
- Wavelet compression schemes: ECW and MrSID

CALL TODAY FOR MORE INFORMATION

Bentley Systems, Incorporated, is a global provider of collaborative software solutions that enable our users to create, manage and publish architectural, engineering and construction (AEC) content. As a part of those solutions, Bentley provides professional services including implementation, integration, customization and training.

Visit us on the Web for more information about Bentley solutions and services. www.bentley.com

Bentley North American Headquarters

Bentley Systems, Incorporated
685 Stockton Drive
Exton, PA 19341 USA
Phone: +1 800 BENTLEY (+1 800 236 8539)
Outside the US +1 610 458 5000
Fax: +1 610 458 1060

GeoModeling

Ilica 191F
HR-10 000, Zagreb
CROATIA
tel: +385-1-3775-411
fax: +385-1-3775-412
info@geomodeling.hr
www.geomodeling.hr

To find a local Bentley office, please visit www.bentley.com/corporate/contacts.

